

# Easel Weaver



Available in 6", 8", and 10" weaving widths

## ASSEMBLING THE EASEL WEAVER

Fasten the rubber feet to the Easel Weaver body from the back using 1/2" pan head screws.



## PARTS INCLUDED

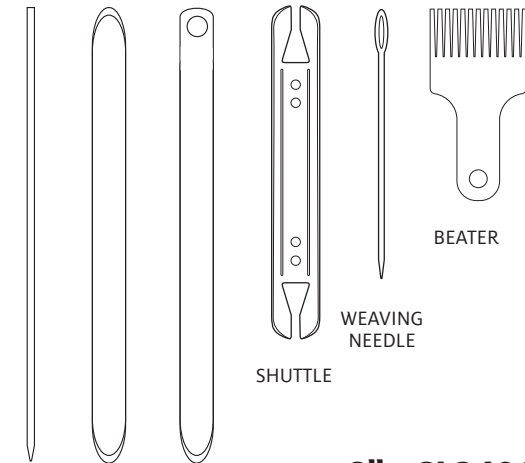
- 1 - Easel Weaver
- 4 - rubber feet
- 4 - 1/2" pan head screws

## TOOLS NEEDED

- Phillips screwdriver



## AVAILABLE WEAVING ACCESSORIES



SHED STICK PICK-UP STICK WEAVING STICK

**6" - SL2406**  
**8" - SL2408**  
**10" - SL2410**

You'll find videos to help you warp and weave with your new Easel Weaver on our website: [schachtspindle.com/item/easel-weaver](http://schachtspindle.com/item/easel-weaver)

## WEAVING TERMS

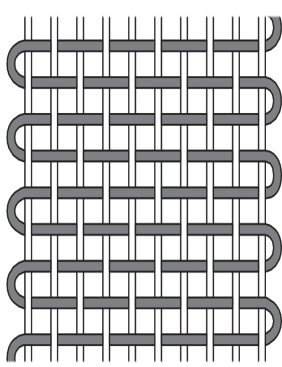
**PICK:** one weft row

**PLAIN WEAVE:** the most basic weave—weft threads go over, under, over, under warp threads.

**SELVAGE:** the edge threads on a piece of weaving.

**WARP:** the threads stretched taut on the loom.

**WEFT:** the threads that weave across the warp.

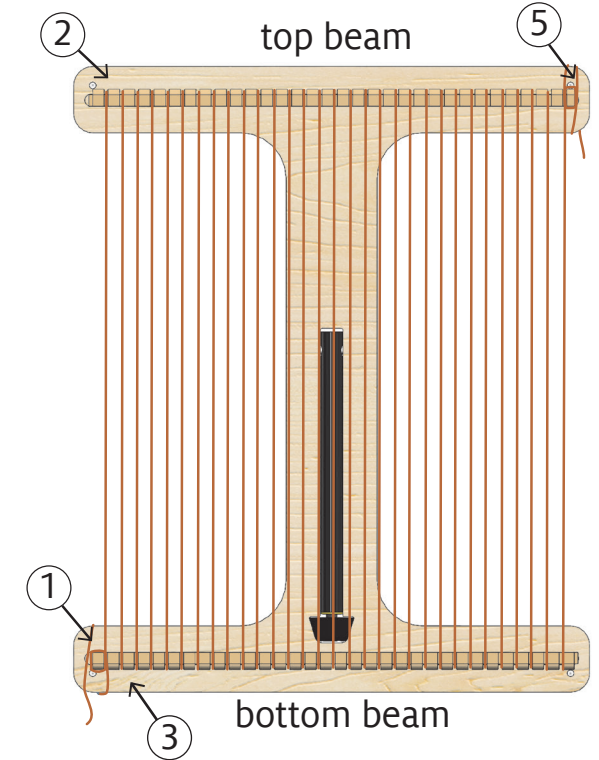


## NOTES

- Decide how wide to make your project so you can center it on the loom.
- When warping, use warping teeth directly opposite each other, and hold the yarn down as you go around the warping teeth.
- To speed up weaving, you can also insert a shed stick, which stays in place as you weave. See our video at [schachtspindle.com/item/easel-weaver](http://schachtspindle.com/item/easel-weaver)

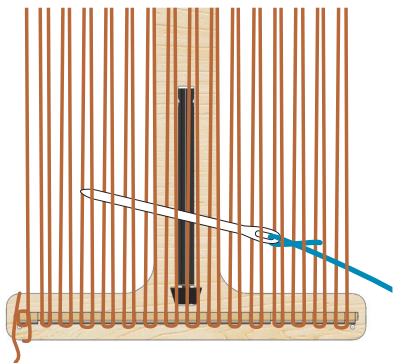
## WARPING

1. Tie warp yarn around the bottom beam at one edge of your project.
2. Carry the yarn to the top and loop yarn around tooth on top beam.
3. Now carry the yarn back to the bottom and loop yarn around the next tooth.
4. Continue across the loom, looping top and bottom teeth, until you reach the other edge of your project.
5. Wrap the warp end snugly around the top beam. Don't tie it yet.
6. Tighten the warp: Start where you began and pull up on the first warp thread to take up any slack. Transfer the slack from the first warp thread to second warp thread. Keep working across the warp, pulling up each thread and moving any slack to the next thread. When you reach the other edge, unwrap the warp end and rewrap it around the top beam to secure it, again taking up slack.
7. Repeat Step 6 until the warp lies taut across the Easel Weaver. (Warp threads don't have to be super-taut, but they have to be firm and even.)
8. Tie the warp end around the top beam.



## WEAVING THE FIRST PICK

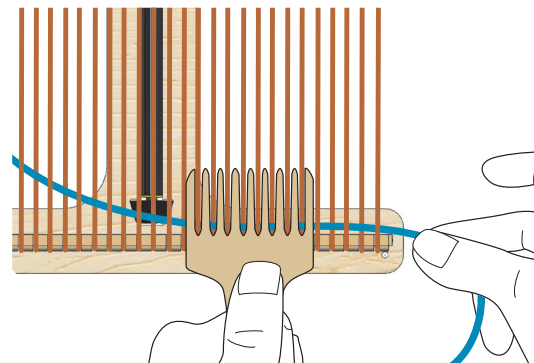
1. Cut a length of weft yarn and thread it through a weaving needle (or wind yarn around a shuttle.)
2. Weave under, over, under, over the warp threads, leaving a 4" tail.
3. Hold the weft yarn at the selvage and place it at a 30° angle.
4. Beat the weft yarn into place with a beater or a metal fork.



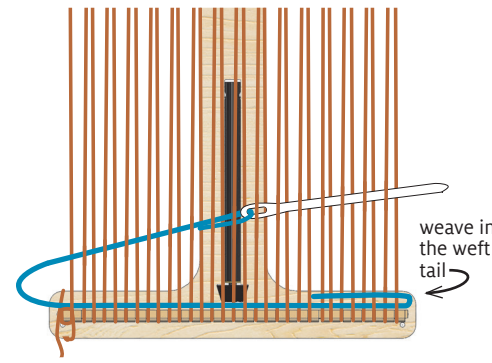
WEAVE UNDER, OVER, UNDER, OVER

## WEAVING THE SECOND PICK

5. Weave in the weft tail.
6. Weave the weft opposite of the previous row: if you wove over a warp thread on the last pick, now weave under it, and so on, placing the yarn at a 30-degree angle.
7. Beat weft yarn into place.
8. After the second pick, repeat steps 7–9, alternating rows (over, under, over, under) until you reach the top of the loom.
9. To start a new weft yarn, overlap the end of the old and start of the new yarns.



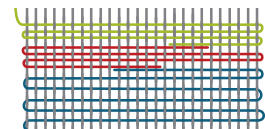
BEAT WEFT YARN



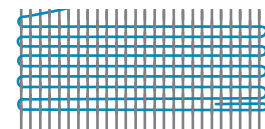
WEAVE OVER, UNDER, OVER, UNDER

## FINISHING

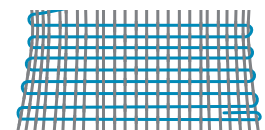
- You can display your finished project on the Easel Weaver or remove it from the loom.
- If you've woven the full length of the loom, you may need a crochet hook to lift off the weaving. If you have lengths of warp at the top or bottom, tie knots in the ends to keep the weft from raveling.
- Wash your woven fabric by hand in warm water and let it air-dry. Clip off all tails.



CHANGING YARN



CORRECT SELVAGE



INCORRECT SELVAGE